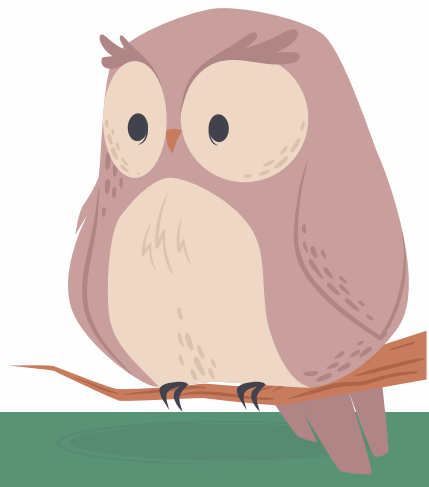




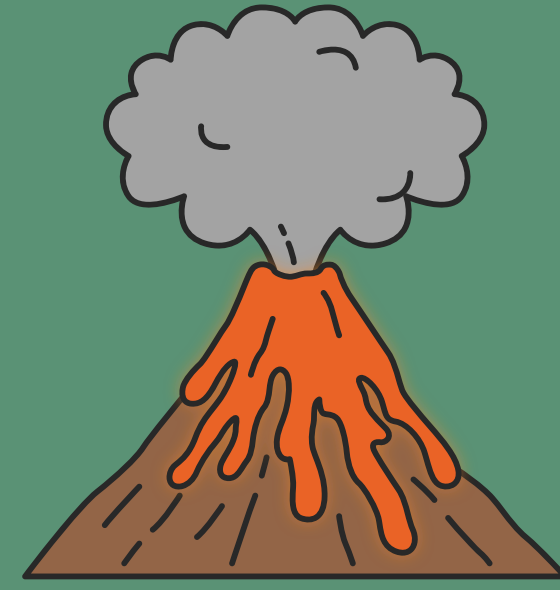
# OWLS CLASS OVERVIEW

## TERM 3



### WHAT WE ARE LEARNING:

- Geography:** Mountains, Volcanoes, Earthquakes
- English:** Narrative - *Holes* by Louis Sachar
- Maths:** Fractions, Decimals & Percentages; Ratio; Problem Solving
- Science:** Looking after our Environment
- PHSE:** Wellbeing
- Art:** Collage
- Music:** Sea Shanties
- French:** 'Pleased to meet you!'
- Computing:** Micro:bit Magic (coding)
- RE:** Why is the Torah so important to Jewish people?
- PE:** Basketball and Gymnastics



**Explore: Danger**



### CLASS TIMETABLE:

**SUBJECT TO CHANGE**

	Monday	Tuesday	Wednesday	Thursday	Friday
	(Mrs Robertson)	(Mrs Robertson)	(Mrs Robertson)	(Mrs Green)	(Mrs Green)
8:40-9:00	Morning Work	Morning Work	Morning Work	Morning Work	Morning Work
9:00-10:30	Maths	English	English	Science	Maths
10:30 - 10:45	Break Time				
10:45-12:00	Project	Guided Reading	PE	Maths	PSHE
12:00-13:00	Lunch Time				
13:00 -14:00	English - SPAG	Maths	Maths	Arithmetic / English	French / RE
14:00 - 14:45	Spelling & Handwriting	Music / Art	Guided Reading	PE	Computing
14:45 - 13:00	Assembly	Assembly	Assembly	In-Class Assembly	Celebration Assembly

### IMPORTANT DATES:

Mondays and Wednesdays 8:00am - Y6 SATS Club in Owls Classroom

- 5.1.26 - INSET DAY
- 6.1.26 - Term 3 Begins
- 29.1.26 - Police visit to Owls
- 2.1.26 - Playleader training at Barcombe school
- Week of 9.2.26 - Careers Week at Hamsey
- 13.2.26 - End of Term 2
- 23.2.26 - Term 4 begins

### WEEKLY REMINDERS:

**Wednesday and Thursday:** PE (come to school in school PE kit)

**Friday:** Reading Record check

#### Home Learning

- Daily Reading (please record in Reading Records)
- Times Table Rockstars
- Y6 - SATS Revision Books & SPAG.com tasks