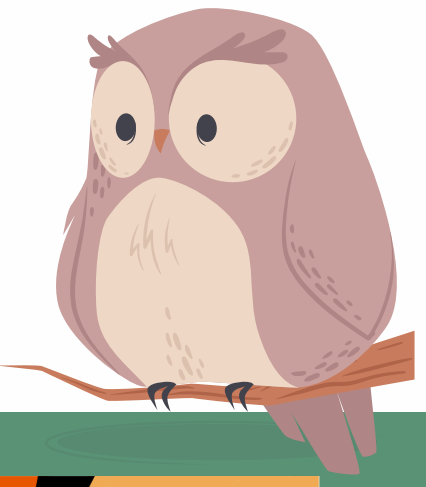




OWLS CLASS OVERVIEW

TERM 5



WHAT WE ARE LEARNING:

Art & Music - Portrait: can we take things at face value? Elements of Music and Art.

English: Spelling, punctuation and grammar; narratives; instruction texts

Maths: Shape; position and direction; problem solving

Science: Life Cycles

PHSE: Relationship, Sex & Health Education (RSHE)

French: Getting to Know You

Computing: Coding & Internet Safety

RE: Hinduism

PE: Cricket and Athletics



Create: Portrait



CLASS TIMETABLE:

SUBJECT TO CHANGE

	Monday	Tuesday	Wednesday	Thursday	Friday
	(Mrs Robertson)	(Mrs Robertson)	(Mrs Robertson)	(Mrs Green)	(Mrs Green)
8:40-9:00	Reading	Reading	Reading	Reading	Reading
9:00-10:30	Maths	Maths	Maths	Maths	Maths
10:30-10:45	Break				
10:45 - 11:00	PE	Assembly			
11:00-12:00		English	English	Science	English
12:00-13:00	Lunch				
13:00 - 13:45	English	Reading & SPAG	Reading & SPAG	Music	Reading & SPAG
13:45 - 15:10	PSHE	Art	Computing / Art	Music	RE / French

IMPORTANT DATES:

21st April - Bank Holiday

22nd April - Term 5 Begins

28th April - Police visit

5th May - Bank Holiday

6th May - PE (moved because of bank holiday)

8th May - VE Day

12th May - SPAG SATS

13th May - Reading SATS

14th May - Arithmetic (1) & Reasoning (2) SATS

15th May - Reasoning (3) SATS

16th May - Year 6 SATS Celebration at Plumpton

20th May - Year 6 PATINA Presentation

21st May - Year 5 Activity Day at Cuckmere Haven

23rd May - End of Term 5

WEEKLY REMINDERS:

Monday: PE (come to school in school PE kit)

Friday: Reading Record check

Home Learning

- Daily Reading (please record in Reading Records)
- Times Table Rockstars
- Y6 - To work through Arithmetic and Reasoning SATS revision books. Please bring in weekly to share progress with class teachers.